

2009 EBT 6th Istanbul Open



Oil Per Board: **50 uL** Oil Pattern Distance: **41 Feet** Volume Oil Total: **28.65 mL** Total Boards Crossed: **573 Boards**

Forward Oil Total: **12.8 mL** Reverse Oil Total: **15.85 mL**
 Forward Boards Crossed: **256 Boards** Reverse Boards Crossed: **317 Boards**

	Start	Stop	Loads	Speed	Crossed	Start	End	Feet	T.Oil
1	5L	5R	2	14	62	0.0	1.9	1.9	3100
2	7L	7R	1	14	27	1.9	3.8	1.9	1350
3	8L	8R	1	14	25	3.8	5.7	1.9	1250
4	11L	10R	3	18	60	5.7	13.3	7.6	3000
5	12L	11R	2	18	36	13.3	18.4	5.1	1800
6	13L	12R	2	18	32	18.4	23.5	5.1	1600
7	14L	13R	1	18	14	23.5	26.0	2.5	700
8	2L	2R	0	18	0	26.0	31.0	5.0	0
9	2L	2R	0	26	0	31.0	41.0	10.0	0

Navigation: Forward Reverse More Info

	Start	Stop	Loads	Speed	Crossed	Start	End	Feet	T.Oil
1	2L	2R	0	30	0	41.0	24.0	-17.0	0
2	10L	10R	1	18	21	24.0	21.5	-2.5	1050
3	2L	2R	3	18	111	21.5	13.9	-7.6	5550
4	2L	2R	5	14	185	13.9	4.0	-9.9	9250
5	2L	2R	0	10	0	4.0	0.0	-4.0	0

Navigation: Forward Reverse More Info

Report Date

3/29/2009

Conditioner:

Prodigy

TransferType:

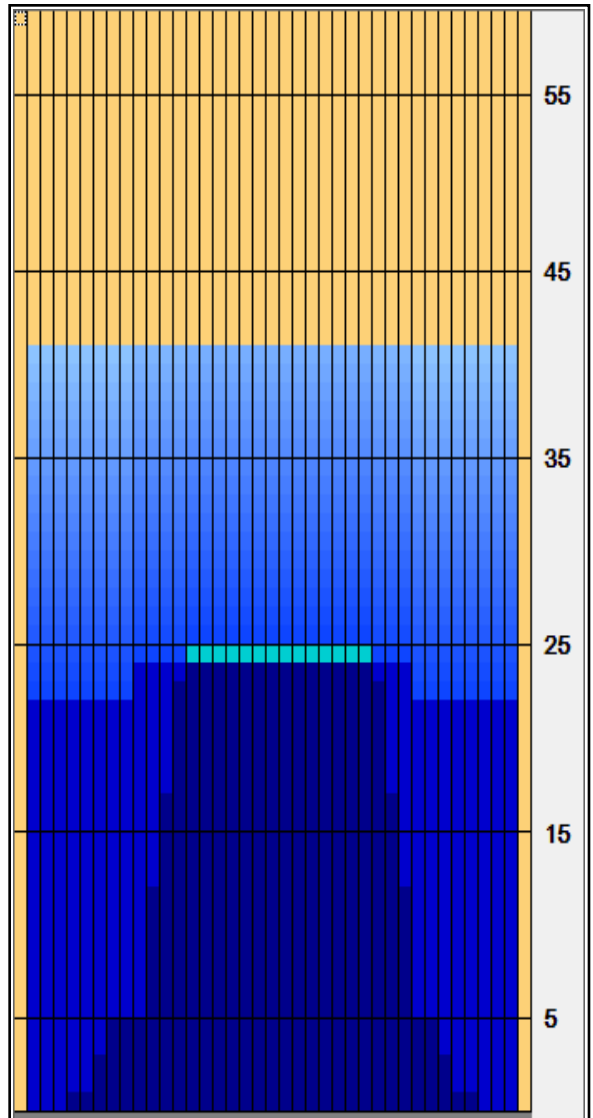
Transfer Brush

Forward Oil

Reverse Oil

Combined Oil

Buff Area



Arrow Zone Ratios

Item	2-5L:16L-20	6-10L:16-20	11-15L:16L-20	16L-20:20-16R	16L-20:20-16R	20-16R:15-11R	20-16R:10-6R	20-16R:5-2R
ul Arrow	425	580	960	1050	1050	1010	610	425
Zone Ratio	2.47	1.81	1.09	1	1	1.04	1.72	2.47

Track Zone Ratios

Item	3L-7L:18L-18R	8L-12L:18L-18R	13L-17L:18L-18R	18L-18R:17R-13R	18L-18R:12R-8R	18L-18R:7R-3R
Description	Outside Track:Middle	Middle Track:Middle	Inside Track:Middle	Middle: Inside Track	Middle:Middle Track	Middle:Outside Track
Track Zone Ratio	2.23	1.48	1.01	1	1.35	2.23

